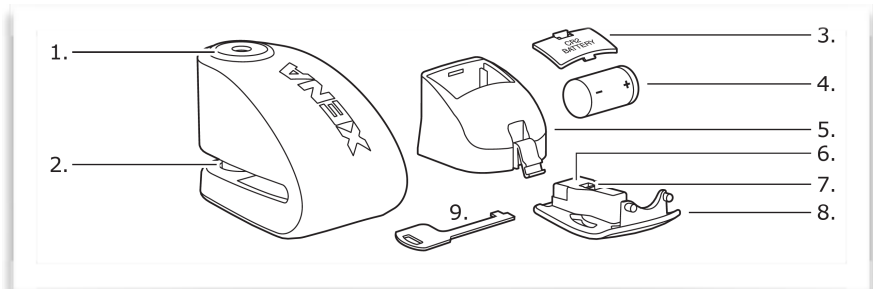


XENA SECURITY XX SERIES BLE DISC-LOCK ALARM QUICK START GUIDE

Questions or comments about your XENA product? Email us at info@xenasecurity.com

What's in the box:

1. Key barrel
2. Locking pin
3. Battery cover
4. CR2 Lithium Battery (supplied)
5. Alarm module
6. Reflector
7. Spring-loaded catch
8. Module cover
9. Key tool (with key code & serial number)



NEW! XENA BLUETOOTH APP

Your new XENA Lock is equipped with Bluetooth connectivity. Download and install the **FREE XENA BLE Lock App** for Android or iOS to adjust alarm volume, sensitivity, duration, turn ON/OFF and monitor battery life.



(To use without the app, simply insert the battery and use as a conventional XENA alarmed disc-lock).

SET UP

NOTE! After initial setup, the Bluetooth connection will only activate *once the lock is in place on a disc.*

1. **Download** and install the **XENA BLE Lock App**.
2. **Insert battery** into the alarm module. You will hear a confirmation “beep” once battery is correctly inserted. Replace the battery door.
3. **Insert module** into the lock and replace base plate .
4. **Open the XENA App** and follow the instructions. Name your device and set a password, then adjust alarm settings and check your battery status. To reset, just remove the battery and re-start the process.
5. **IMPORTANT! After initial setup**, the Bluetooth connection will only activate *once the lock is in place on a disc.* If the app is closed or interrupted after setup, the lock will need to be on a brake disc to reconnect the App.
6. **After successfully pairing to your Smartphone** and the device is set up, there is no need to enter your password.
7. **Each time you remove the battery**, the password and device will be reset.
8. **If you use another smartphone or tablet** to connect to your lock, you will need to re-enter the password.
9. **Select** the user language in the settings menu.

CHANGING THE BATTERY (fig. A & fig. B, overleaf)

- Locate spring-loaded catch inside disc slot (fig.B).
- Use key tool to slide back catch; release and remove lid.
- Locate clear plastic tab on module and lift to remove module from lock body.
- Remove battery door (marked “CR2 BATTERY”).
- Remove used battery and discard responsibly.*
- Ensure that + and – contacts are properly aligned.
- Insert fresh CR2 battery and battery door.
- Carefully replace module in lock body and reattach module cover.
- The key tool comes in handy to depress the spring-loaded catch.

* Lithium batteries are best disposed of as a non-hazardous waste when fully or mostly discharged.

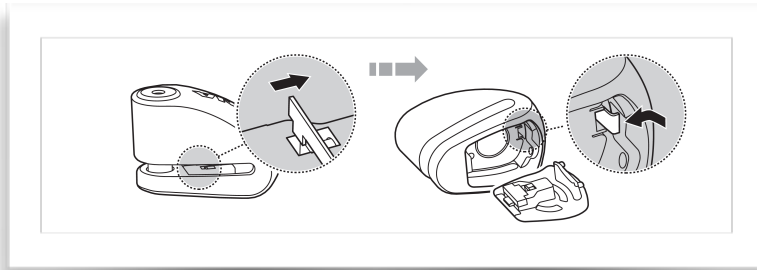
* DO NOT INCINERATE or subject battery cells to temperatures in excess of 212°F.

NOTE: When the module is removed from the lock body, the alarm will activate. To minimize this, insert module into lock body and replace lid immediately after inserting battery.

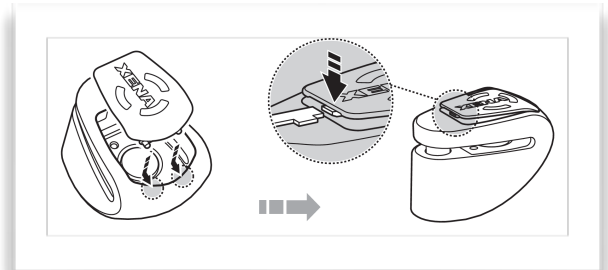
XENA SECURITY XX SERIES BLE DISC-LOCK ALARM QUICK START GUIDE

Questions or comments about your XENA product? Email us at info@xenasecurity.com

A. Opening lid and removing module



B. Replacing lid



BATTERY LIFE

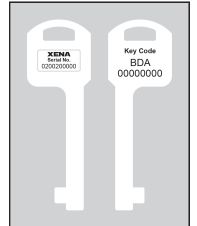
Batteries last 6 to 8 months with normal use. Frequent triggering or extreme temperatures can shorten battery life.

KEYS

Each XX Series lock comes with a key-ring, three keys and a flat key-tool etched with a unique code number (ie, HAB123456) and serial number (ie, 1234567890). Write down your key code and store safely.

REGISTERING YOUR XENA LOCK

On the key-shaped metal tool (fig. D), you'll find your two unique ID numbers: Please input both when registering at www.xenasecurity.com/registration.



“WAKING UP” YOUR ALARM

- **Avoid draining battery when not in use.** Your XENA disc-lock alarm has a dormant power mode. Usually metal-on-metal contact from locking the lock onto your brake-disc will allow the unit to arm normally.
- **IF NOT, it may be necessary to wake the arming sensor** by firmly locking and unlocking the barrel once or twice.

CARING FOR YOUR LOCK

- Use a dry cloth to keep the LED reflector plate inside the disc-slot clean and free of dirt, dust and grease. An obstructed reflector plate can affect performance and may cause the lock to arm when not on the brake disc.
- We recommend applying a lock lubricant to the lock barrel every six months.

TRANSPORTING YOUR LOCK

- Ideally you should stow your XENA underneath the seat of your bike.
- **CAUTION:** Do not carry your XENA in, or attach it to, your clothing. This may contribute to injury in the event of an accident.

TROUBLESHOOTING

- **Alarm not arming:** Check battery, ensure reflector is obstructed by disc. Confirm sensors are active (see below).
- **Constant clicking** or low beeping sound: replace batteries.
- **Alarm too sensitive:** Use app to raise sensitivity setting. Place at 6 o'clock on disc.
- **Alarm not sensitive enough:** Use app to reduce sensitivity setting. Place at 12 o'clock on disc.
- **Alarm won't disarm:** Clean sensor and reflector.

IF ALARM IS DAMAGED

- The alarm module is removable and replaceable. Replacement modules are available from authorised XENA dealers or by emailing us directly at info@xenasecurity.com. **NOTE:** the lock remains effective with or without the alarm system.

Disclaimer

Our products are sold as security enhancements, and are not a substitute for the end-user's duties of normal care and attention. As such, XENA Security accepts no responsibility or liability for any direct or consequential loss, damage or injury arising or resulting from the use or misuse of our products howsoever arising, save that we will always replace any product found to be defective within the warranty period.